

## Guide: Connecting to SSID with Cisco Posture (AnyConnect / ISE)

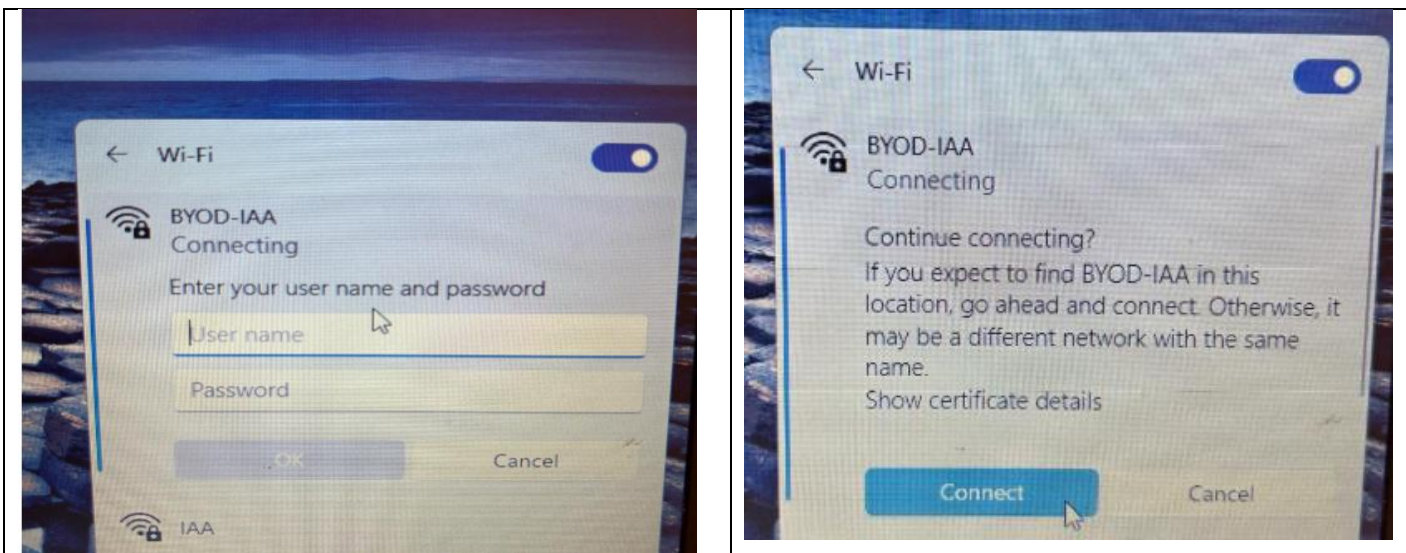
### Steps to Connect Automatically (Preferred)

#### Step 1 – Click Wi-Fi icon

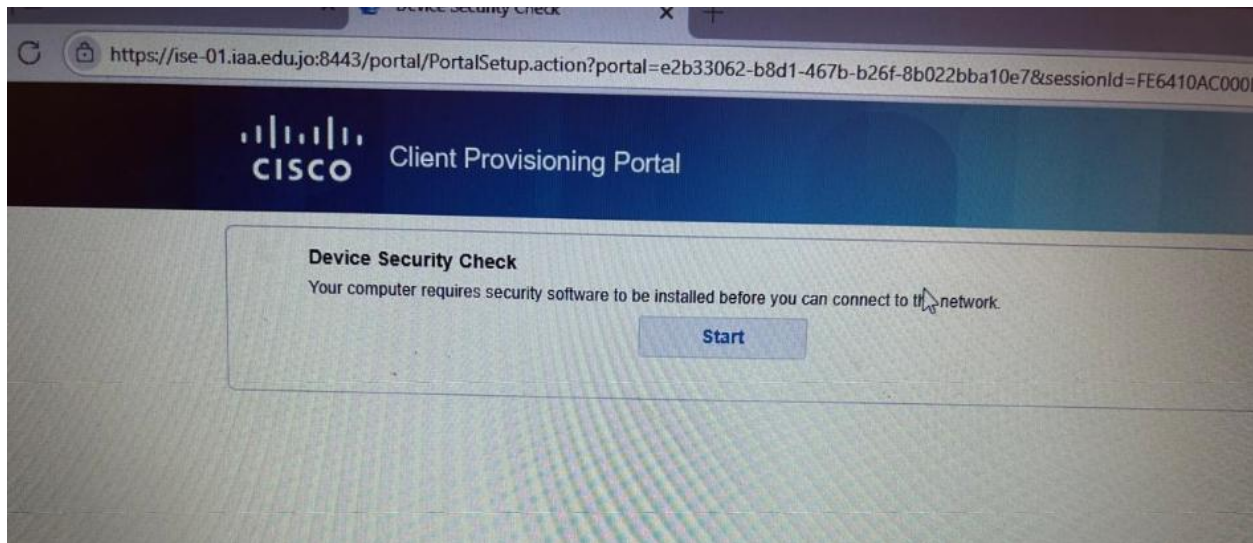
- On **Windows**:
  - Click on the **Wi-Fi icon** in the system tray.
  - Select **BYOD-IAA**.
- On **macOS**:
  - Click **Wi-Fi icon** in the menu bar.
  - Select **BYOD-IAA**.

#### Step 2 – Enter Credentials

- Type your **username without iaa.edu.jo** and **password**.
- Accept the certificate if prompted.

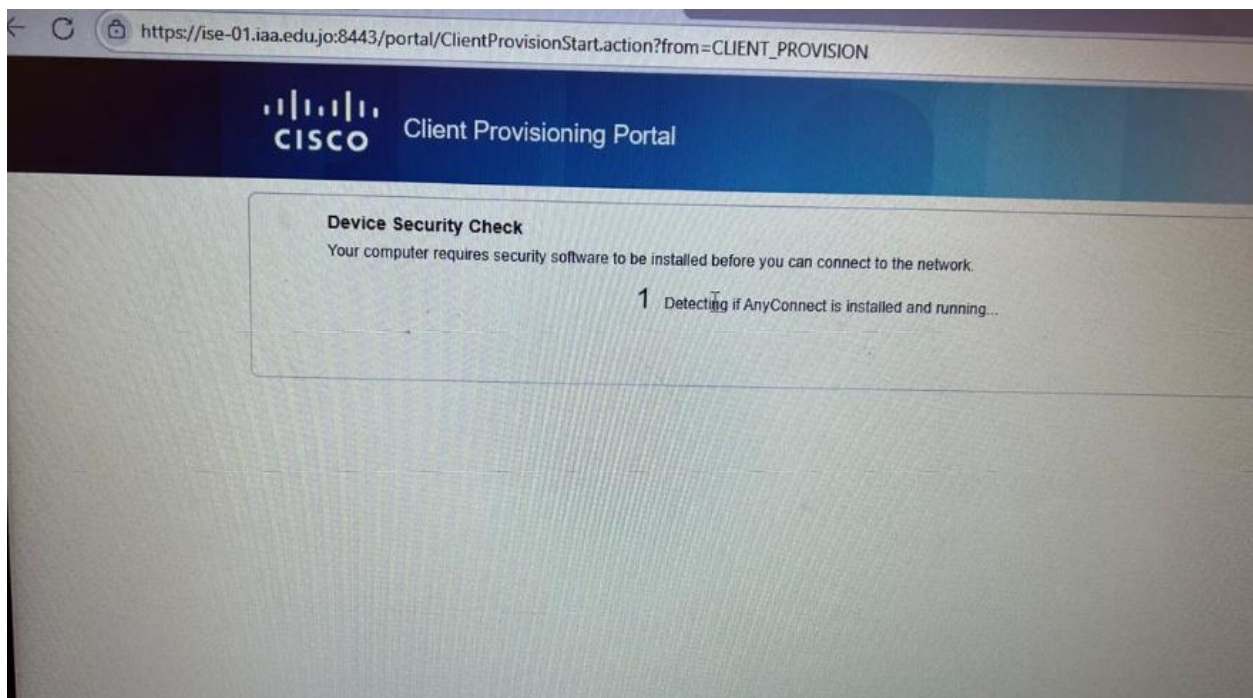


- Select the SSID (e.g., **BYOD-IAA**).
  - Then Click **Start** on browser



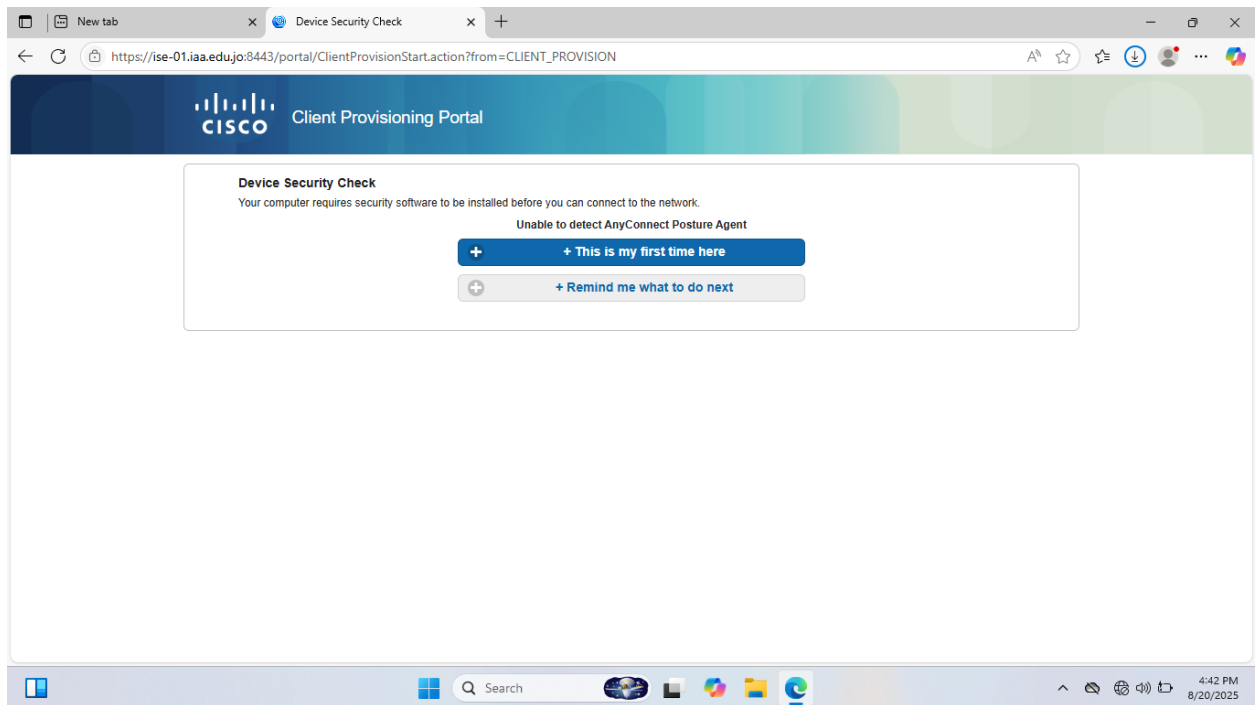
### Step 3 – Cisco Posture Validation

- Once connected, **Cisco Secure Client** will launch automatically.
- It checks your laptop for posture compliance (antivirus, patches, etc.).

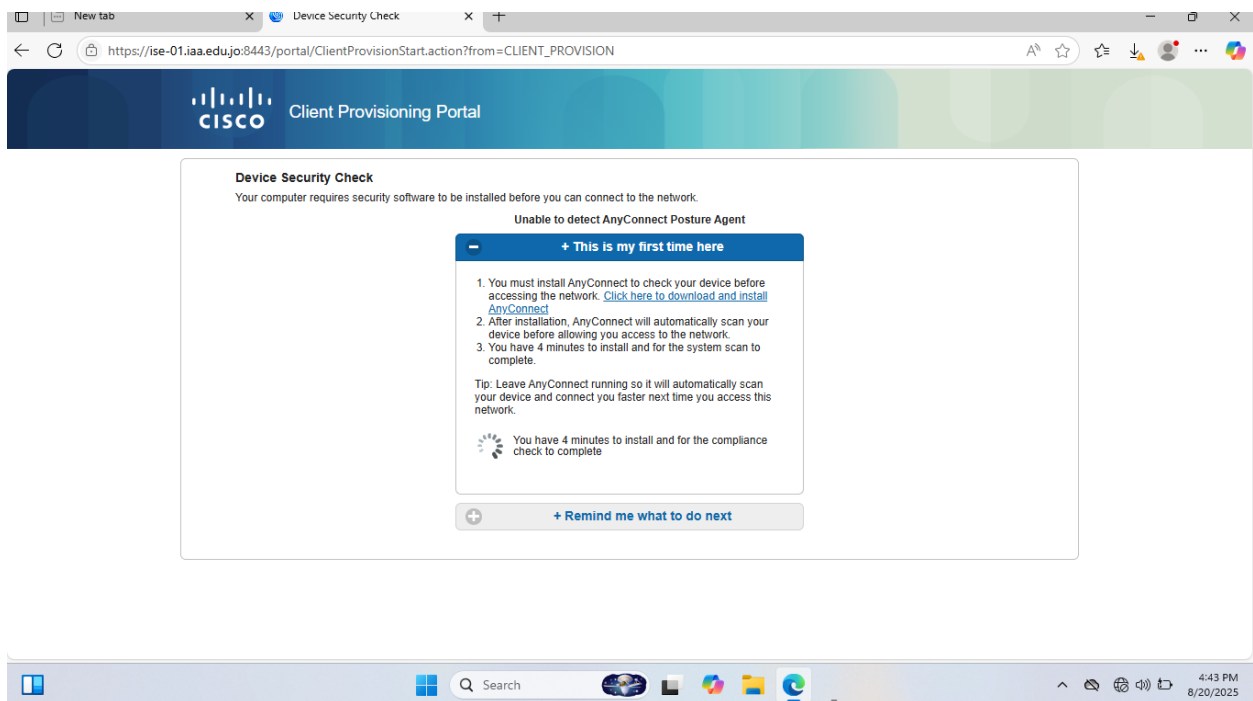


- Redirected to remediation page (install/update software).

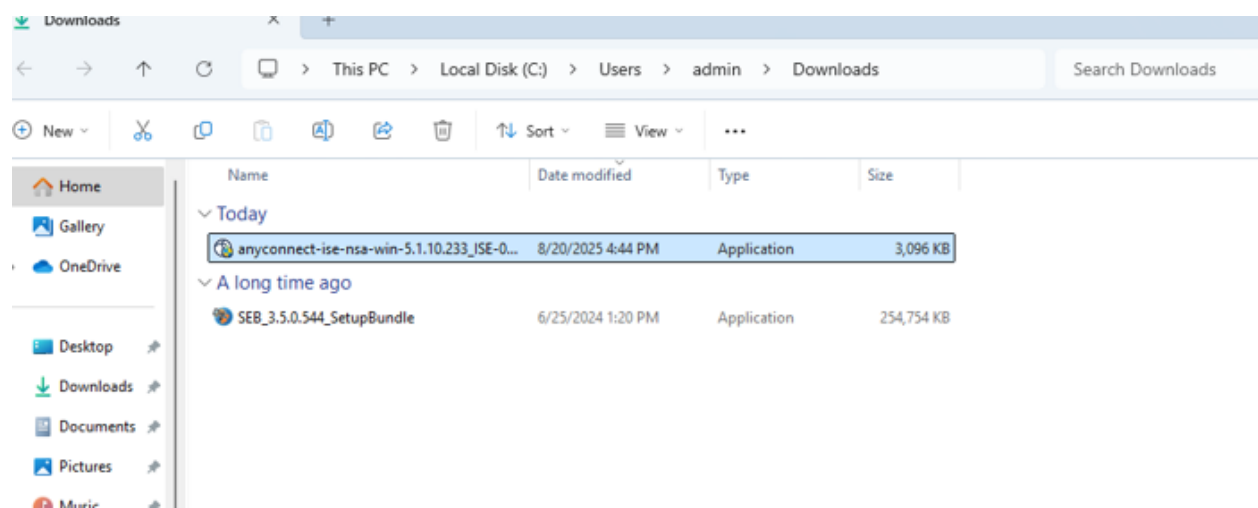
- Click on first time here
- And follow the instructions on the pictures



Click on here to Download .exe for windows and dmg for Mac



then click on anyconnect-ise-nsa on download to install the setup or unpackage for dmg



Click on Connect

